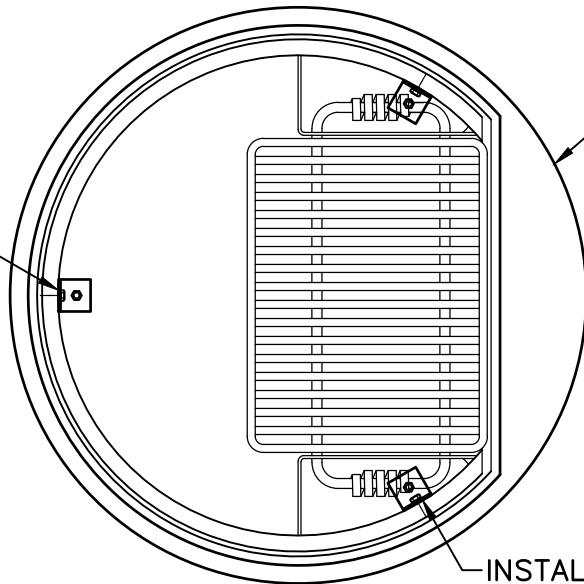


5" THICK X 3'-0" DIA
UNREINFORCED CONC
FOOTING IN UNPAVED AREAS.
INDEPENDENT FOOTING IS
NOT REQUIRED IN CONC
PAVED AREAS

INSTALL BRACKET
3 PLACES

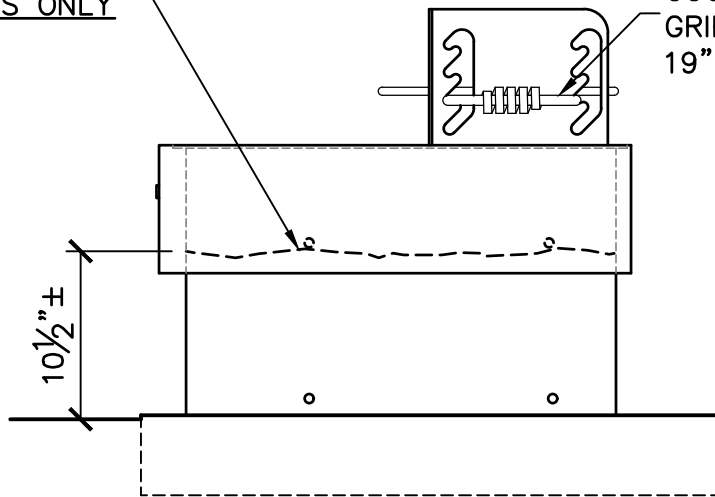


INSTALL BRACKET

(A) PLAN VIEW

FILL RING WITH GRAVEL
TO UPPER DRAIN HOLES
AT ADA SITES ONLY

FOUR-LEVEL ADJUSTABLE
COOKING GRATE WITH SPRING
GRIPS (HEIGHT ADJUSTABLE
19" TO 24" ABOVE GRADE)



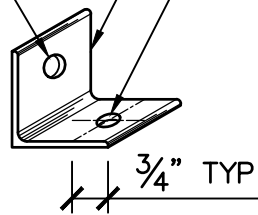
NEATLY TOOL FINISH
EDGE OF CONCRETE
 $\frac{1}{4}" \pm$ ABOVE GRADE
WHERE APPLICABLE.
SLOPE SURROUNDING
GRADE TO DRAIN

(B) ELEVATION

$\frac{1}{2}"$ DIA HOLE FOR $\frac{3}{8}"$
PHILLIPS TRUSS HEAD OR
PAN HEAD MACHINE SCREW.
INSTALL NUT, WASHER, AND
LOCK WASHER INSIDE RING

GALVANIZED L 2 X 2 X $\frac{1}{8}$ X 2" LENGTH

$\frac{1}{2}"$ DIA HOLE FOR $\frac{3}{8}"$ DIA
EXPANSION ANCHOR BOLT



EXPANSION ANCHOR BOLTS

$\frac{3}{8}"$ DIA STAINLESS STEEL WEDGE ANCHOR;
3" MIN HOLE DEPTH FOR $2\frac{1}{2}"$ MIN
EMBEDMENT; SIMPSON STRONG-BOLT 2
(TYPE 304 STAINLESS STEEL), HILTI KWIK
BOLT 3 SS304, RED HEAD TRUBOLT 304,
OR EQUAL.

(C) BRACKET DETAIL



CAMPFIRE RING

REVIEWED BY THE PARK STANDARDS COMMITTEE, AND
APPROVED BY THE CHIEF OF DESIGN & CONSTRUCTION

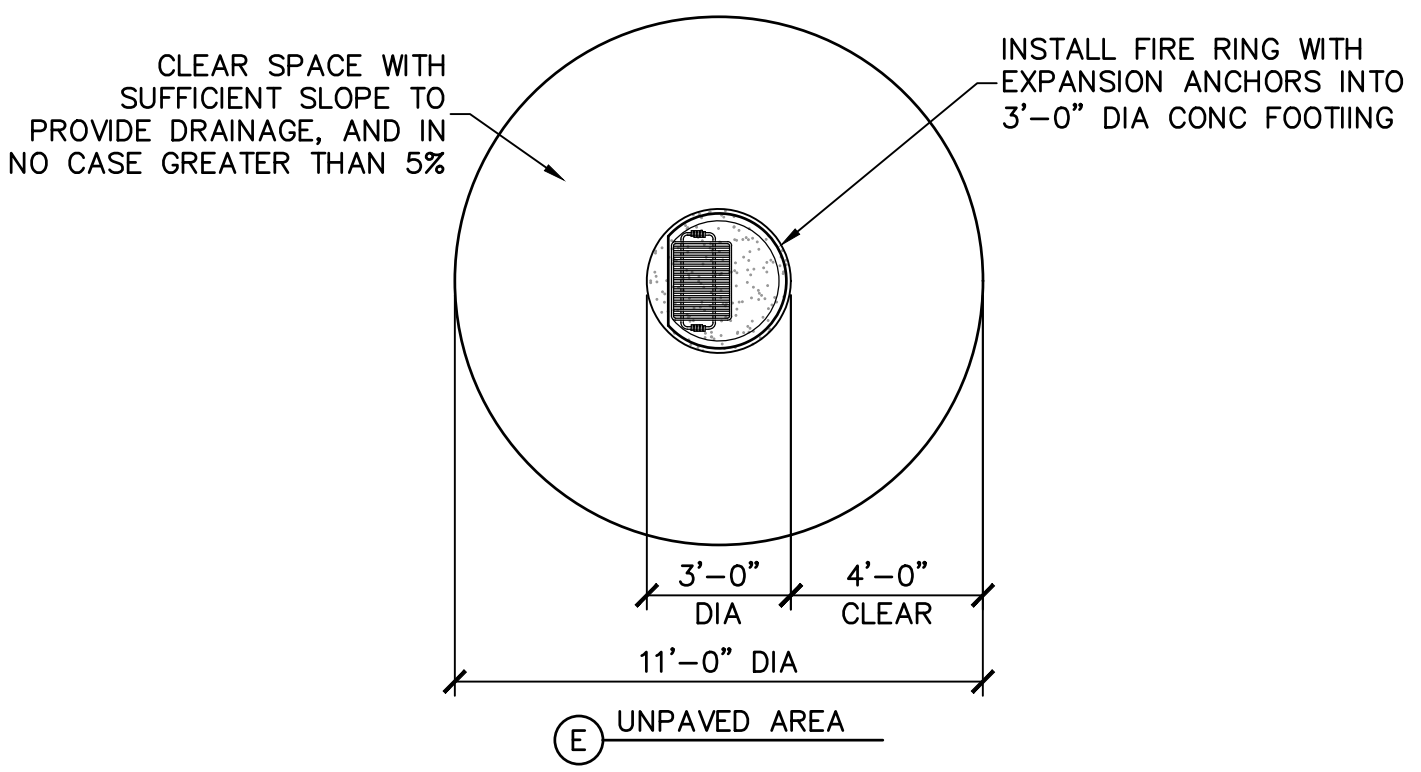
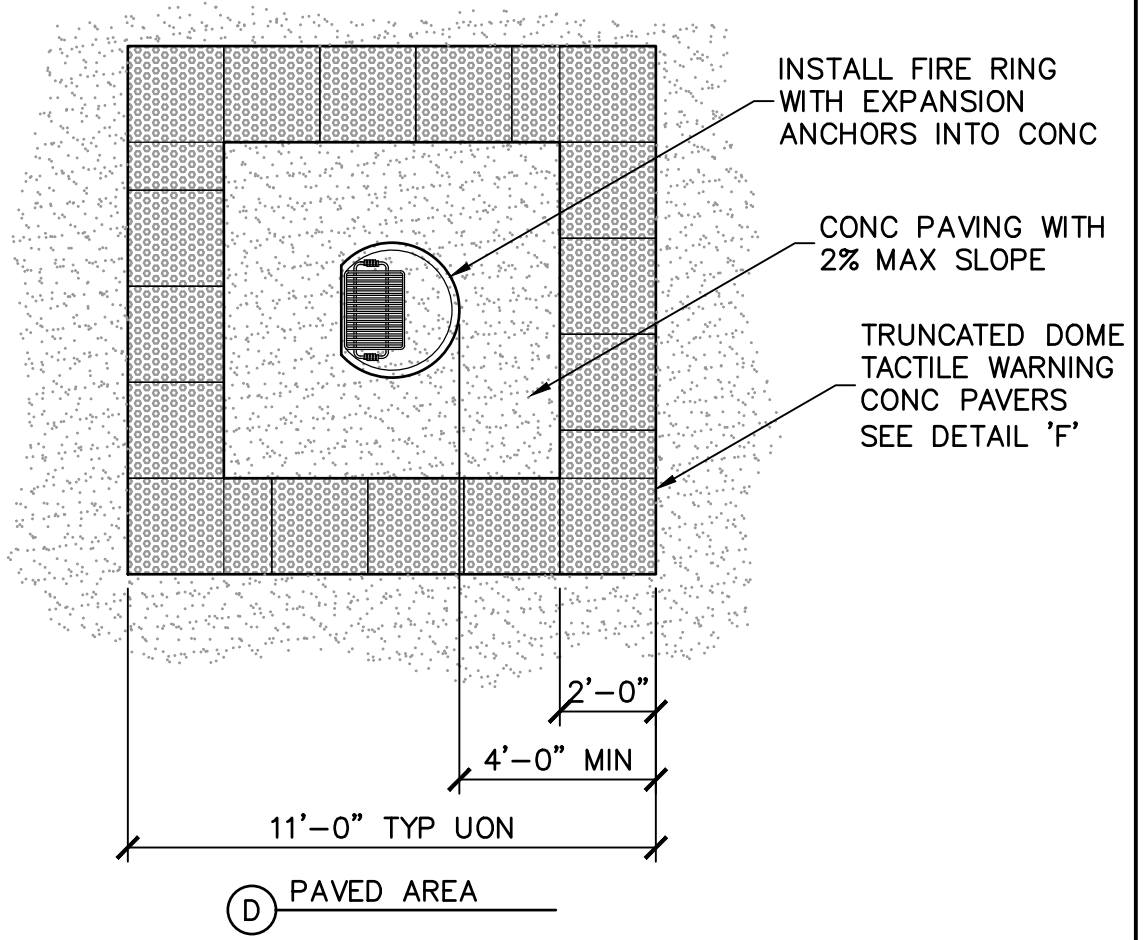
Signature

04/06/2022

STD PLAN

520

SHEET 1 OF 4
NOT TO SCALE



CAMPFIRE RING

REVIEWED BY THE PARK STANDARDS COMMITTEE, AND APPROVED BY THE CHIEF OF DESIGN & CONSTRUCTION

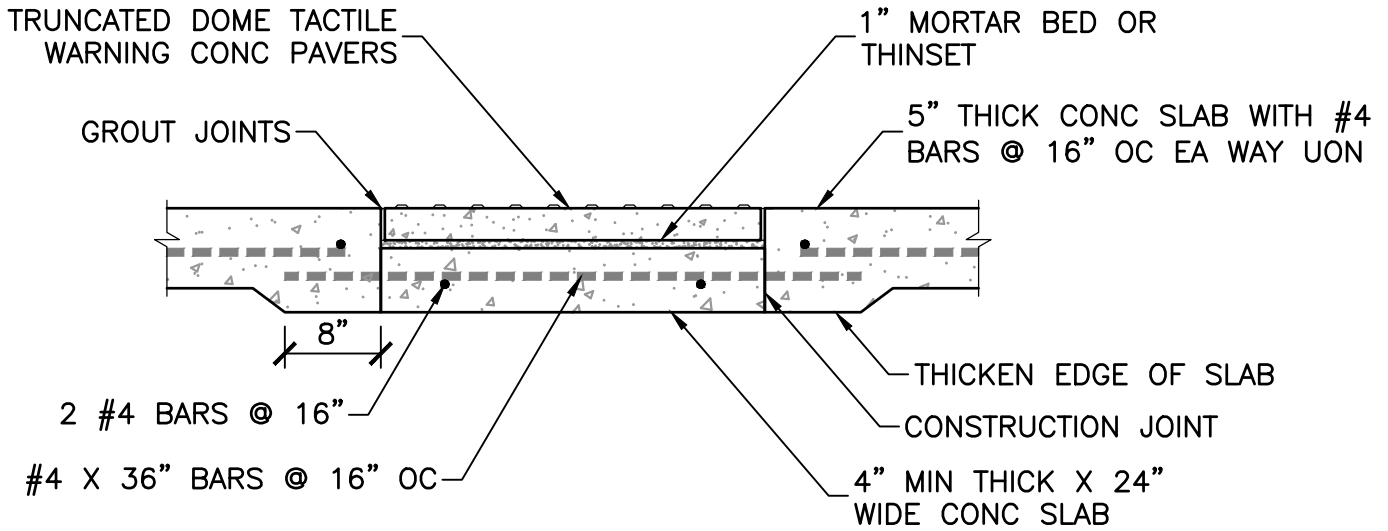
Signature

04/06/2022

STD PLAN

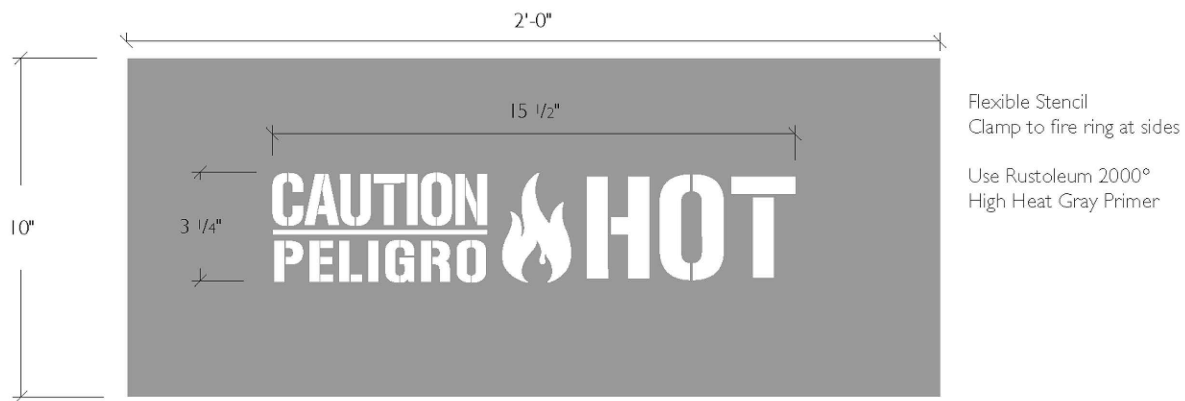
520

SHEET 2 OF 4
NOT TO SCALE

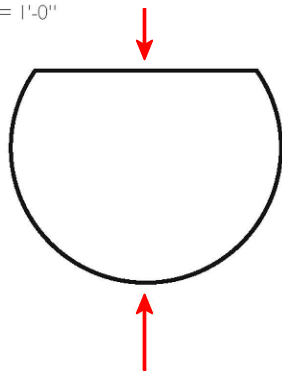


(F) TACTILE WARNING PAVER INSTALLATION

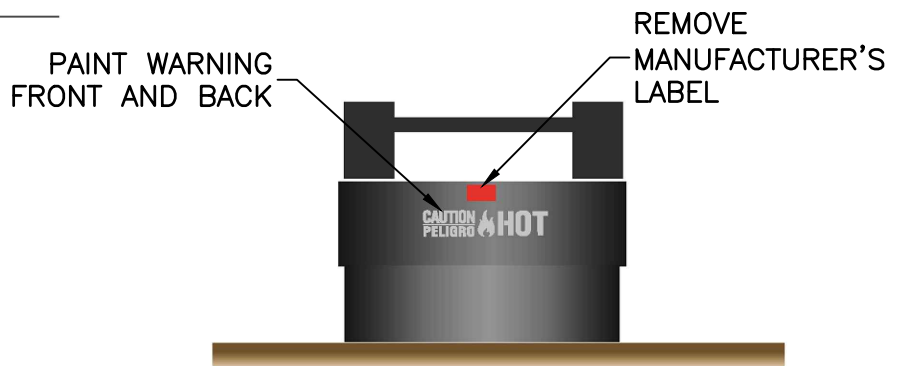
Fire Ring Stencil



1 FI - Fire Ring Stencil
Scale: 3/4" = 1'-0"



2 Plan View Message Location
Scale: 3/4" = 1'-0"



3 Finished Message
Scale: 3/4" = 1'-0"

Creative Design Group
11/23/20

(G) WARNING STENCIL

East Bay Regional Park District



CAMPFIRE RING

REVIEWED BY THE PARK STANDARDS COMMITTEE, AND APPROVED BY THE CHIEF OF DESIGN & CONSTRUCTION

Signature

04/06/2022

EAST BAY REGIONAL PARK DISTRICT - STANDARD PLANS

STD PLAN
520
SHEET 3 OF 4
NOT TO SCALE

NOTES AND SPECIFICATIONS

1. FIRE RING
 - a. MANUFACTURER: PILOT ROCK, WWW.PILOTROCK.COM
 - b. MODEL: M-32/17/PA/H (CAMPFIRE RING WITH HEAT SHIELD)
 - b. CAMPFIRE RING MAY BE AVAILABLE AT CENTRAL STORES FOR PURCHASE BY PARK DISTRICT STAFF.
2. TACTILE WARNING PAVERS
 - a. REQUIRED WHEREVER FIRE RING IS INSTALLED IN A PAVED AREA.
 - b. CONCRETE PAVERS, MIN 28-DAY COMPRESSIVE STRENGTH $f'c = 5,000$ PSI.
 - c. 2" MIN NOMINAL THICKNESS X 24"
 - d. CHARCOAL COLOR
 - e. DETECTABLE WARNINGS SHALL CONSIST OF RAISED TRUNCATED DOMES WITH A DIAMETER OF NOMINAL 0.9" (23mm), A HEIGHT OF NOMINAL 0.2" (5mm), AND A CENTER-TO-CENTER SPACING OF NOMINAL 2.35" (60mm).
 - f. MANUFACTURER/SUPPLIER: WAUSAU TILE (WWW.WAUSAUTILE.COM), STEPSTONE, INC. (WWW.STEPSTONEINC.COM), HANOVER ARCHITECTURAL PRODUCTS (WWW.HANOVERPAVERS.COM), OR EQUAL.
3. GRAVEL
 - c. INSIDE FIRE RINGS AT ADA SITES ONLY, USE $\frac{3}{4}$ " TO 1" NON-GRADED ANGULAR GRAVEL OR CRUSHED ROCK. DO NOT USE RIVER ROCK OR RECYCLED MATERIAL.
5. HIGH TEMPERATURE PAINT: AUTOMOTIVE HIGH HEAT PAINT, FLAT BLACK AND GRAY (MAY BE PRIMER), RATED TO 2000° F INTERMITTENT TEMPERATURE, BY RUSTOLEUM, THERMO-TEC, EASTWOOD, OR EQUAL
6. AFTER INSTALLATION, TOUCH-UP ANY DAMAGE TO PAINTED METAL FINISH WITH HIGH-TEMPERATURE BLACK PAINT TO MATCH FIRE RING.
7. BURN PAINT OFF OF THE COOKING GRATE BEFORE PUBLIC USE BY SETTING A VERY HOT FIRE AND LETTING IT BURN FOR SEVERAL HOURS.
8. ADA ACCESSIBLE FIRE RING AND BARBECUE CLEAR SPACE REQUIREMENTS (CALIFORNIA STATE PARKS ACCESSIBILITY GUIDELINES):
 - a. GRILLS, FIRE RINGS, ETC. SHALL BE PLACED SUCH THAT THERE IS A MINIMUM 48" CLEAR SPACE (360°) SURROUNDING THE COOKING FACILITY.
 - b. GRILLS, FIRE RINGS, ETC. SHALL BE SURROUNDED BY A FIRM, STABLE GROUND SURFACE. A FIRM SURFACE IS ONE WHICH DOES NOT GIVE WAY SIGNIFICANTLY UNDER FOOT AND RESISTS INDENTATION FROM A PERSON'S FOOT, WHEELCHAIR OR OTHER ASSISTIVE MOBILITY DEVICE.
 - c. THE MAXIMUM SLOPE OF THE CLEAR SPACE SURROUNDING GRILLS, FIRE RINGS, ETC. SHALL BE 2% FOR PAVED SURFACES, AND UP TO 5% AS REQUIRED FOR DRAINAGE OF UNPAVED SURFACES.
 - d. IN ACCESSIBLE, DEVELOPED CAMPGROUND SITES AND PICNIC AREAS WHERE CONCRETE OR OTHER HARD SURFACE PAVING EXISTS OR IS TO BE INSTALLED, A DETECTABLE WARNING SHALL BE PROVIDED AROUND THE GRILL, FIRE RING, ETC. TO ALERT BLIND AND VISUALLY IMPAIRED PERSONS TO THE LOCATION OF THE GRILL, FIRE RING, ETC. THIS WARNING SURFACE SHALL HAVE A MINIMUM DEPTH OF 24" AND SHALL PROVIDE CLEAR VISUAL CONTRAST FROM THE IMMEDIATE ADJOINING SURFACES.



CAMPFIRE RING

REVIEWED BY THE PARK STANDARDS COMMITTEE, AND APPROVED BY THE CHIEF OF DESIGN & CONSTRUCTION

04/06/2022

EAST BAY REGIONAL PARK DISTRICT - STANDARD PLANS

STD PLAN

520

SHEET **4** OF **4**
NOT TO SCALE